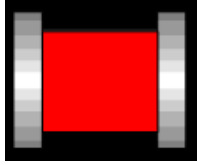
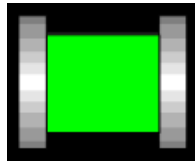


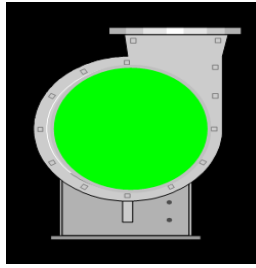
FACEPLATES



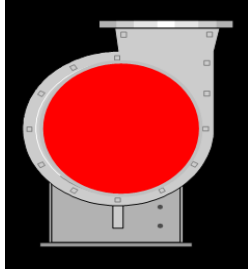
Close valve



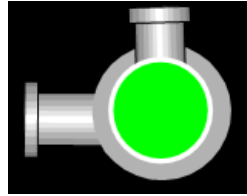
Open valve



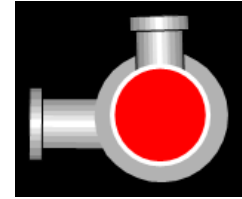
VAPOUR EXHAUST BLOWER (ON)



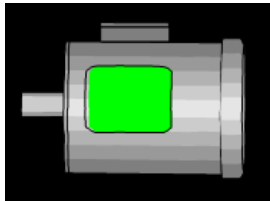
VAPOUR EXHAUST BLOWER (OFF)



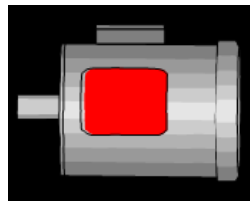
PUMP (ON)



PUMP (OFF)



MOTOR (ON)



MOTOR (OFF)



INDICATOR (ON)

WELCOME SCREEN

DAR-E-SALAAM
400 BPM CSD LINE
MBEYA

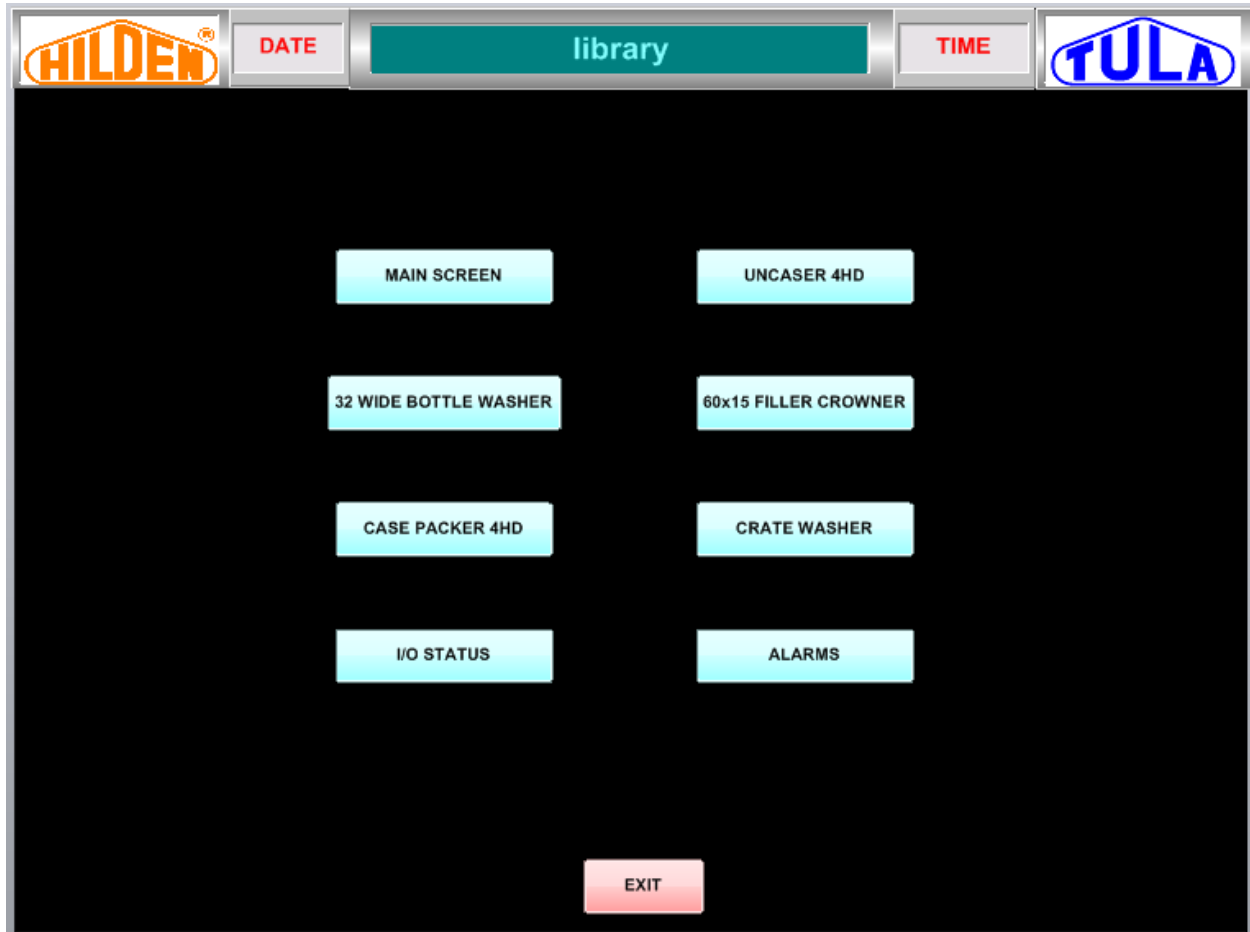
DESIGNED BY



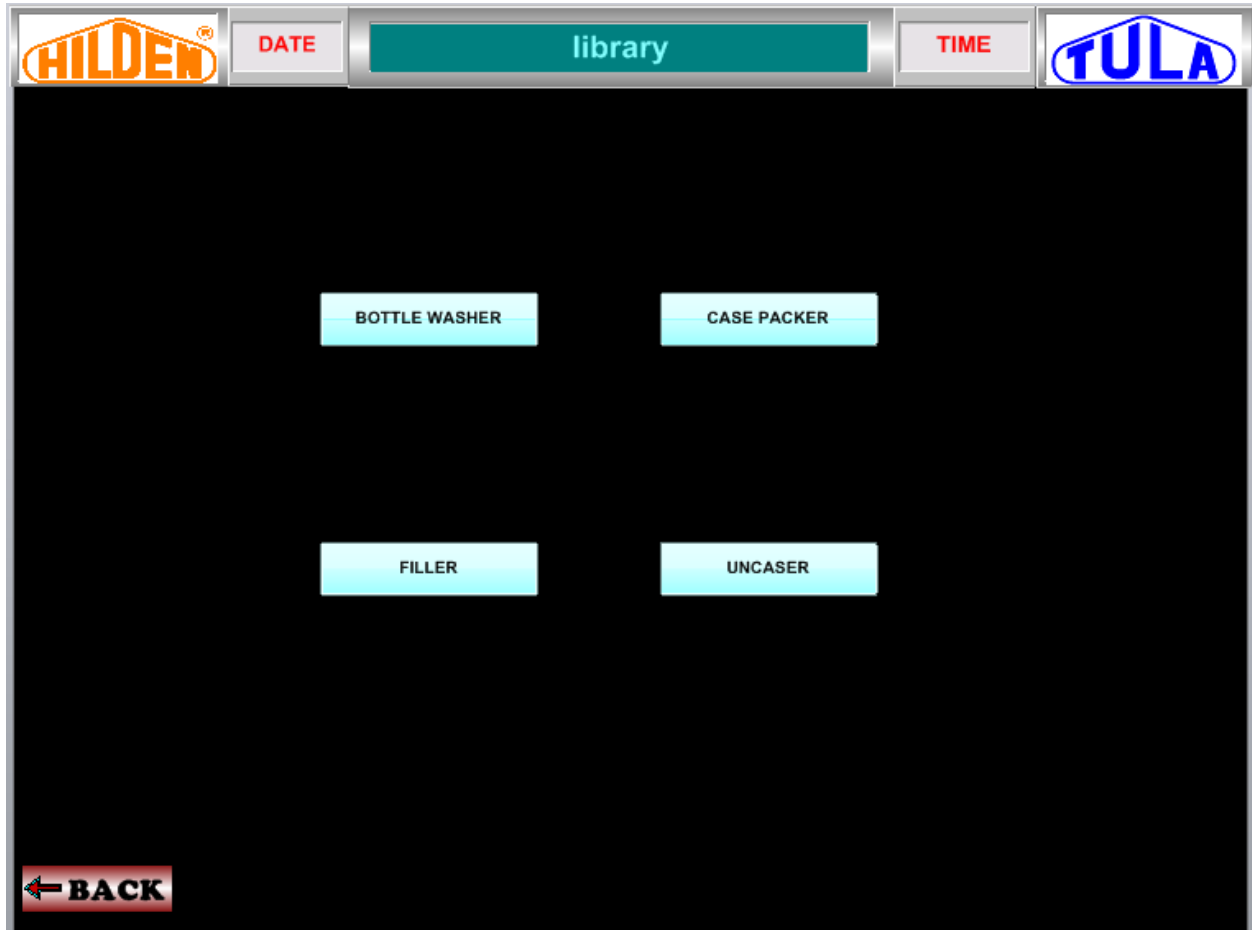
HILDEN PACKAGING MACHINES PVT. LTD.

INDEX

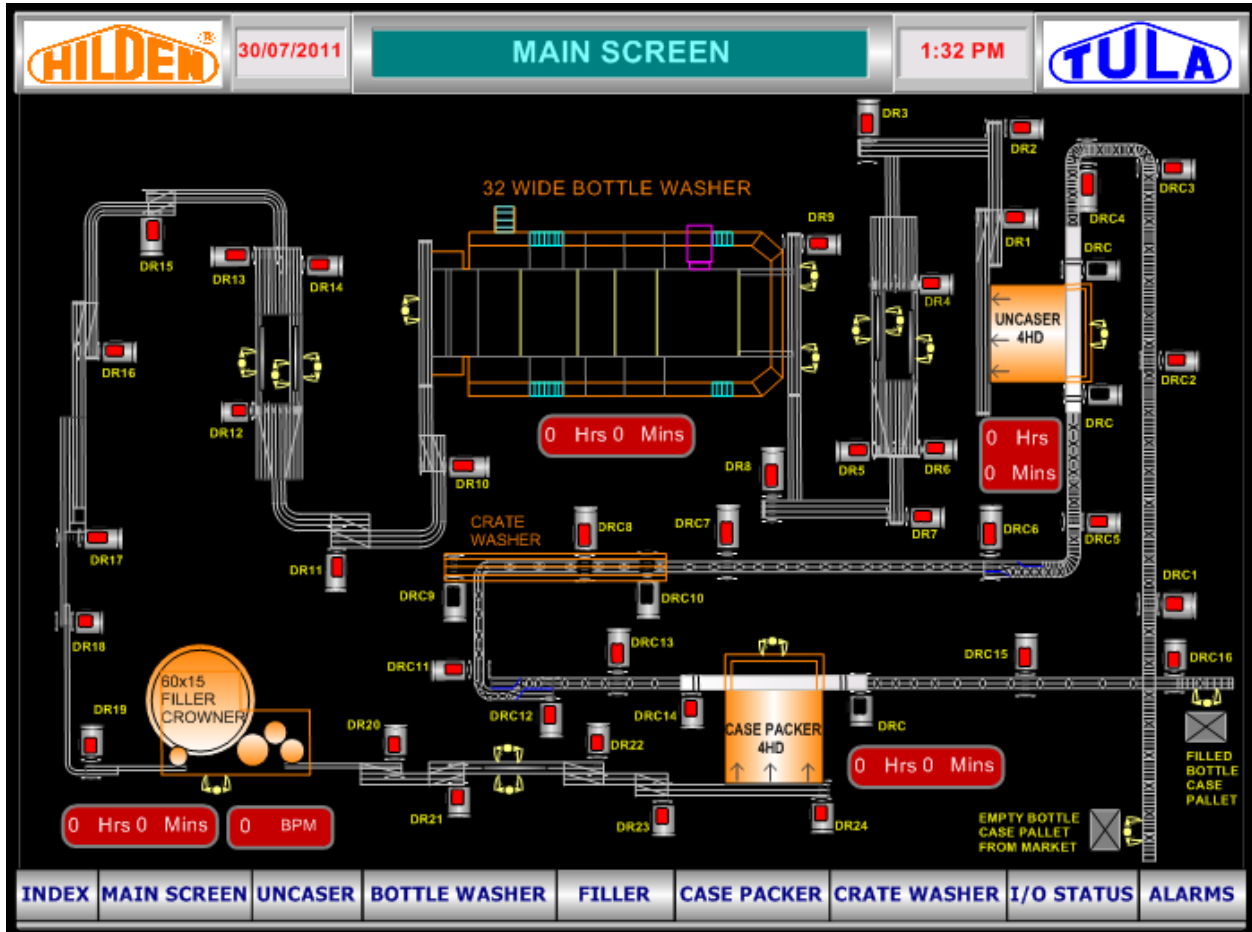
INDEX



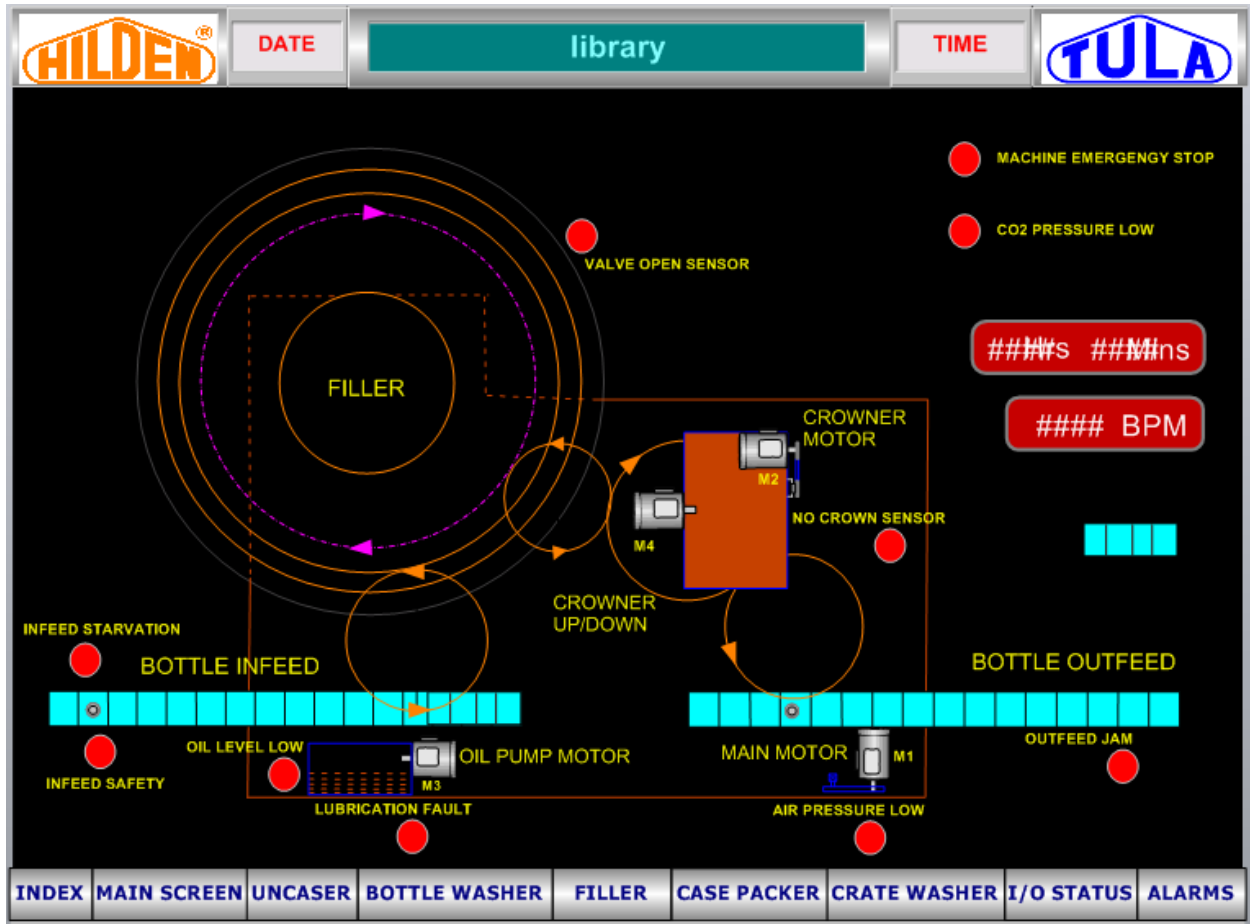
I/O STATUS SELECTION SCREEN



MAIN SCREEN

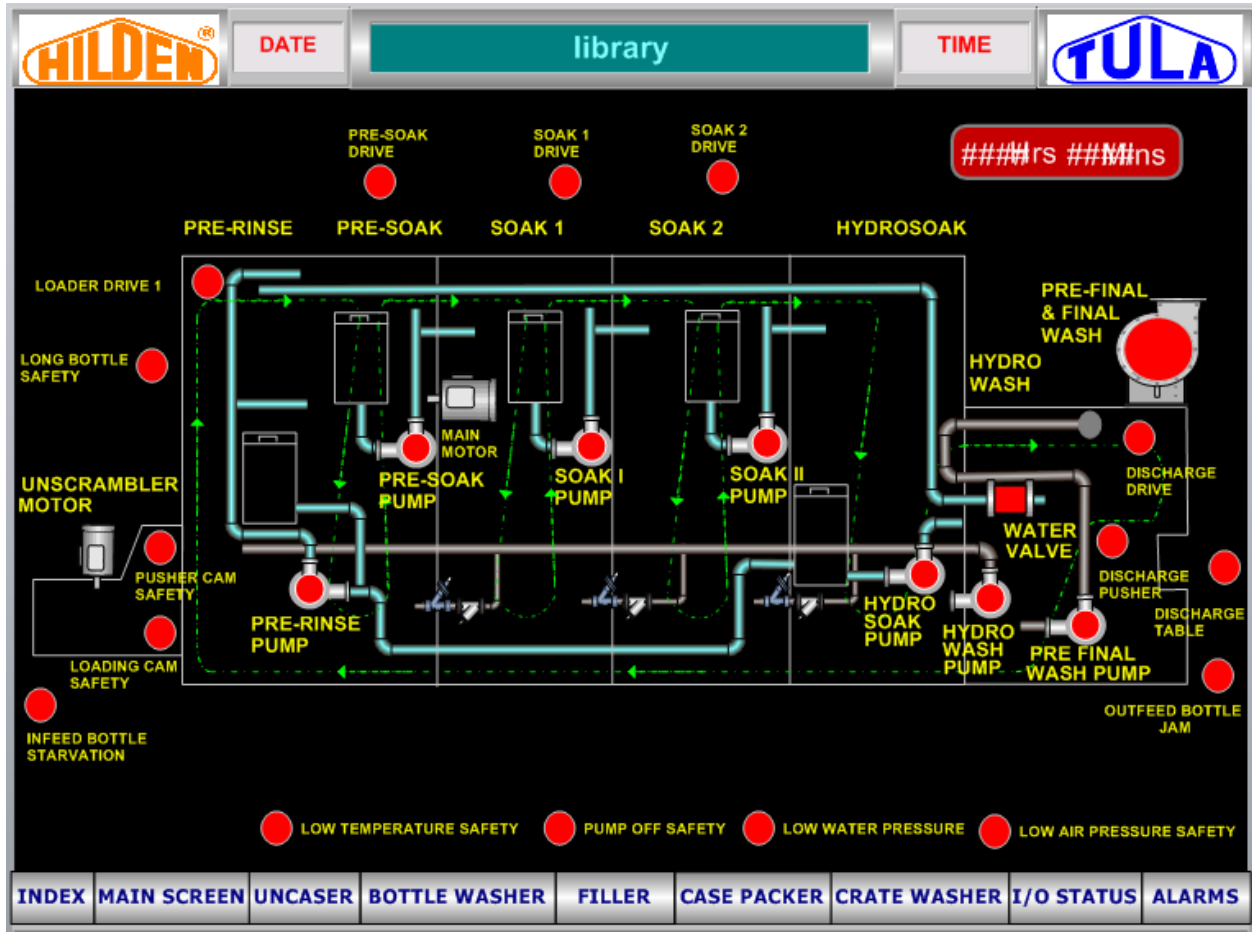


60/15 FILLER-CROWNER



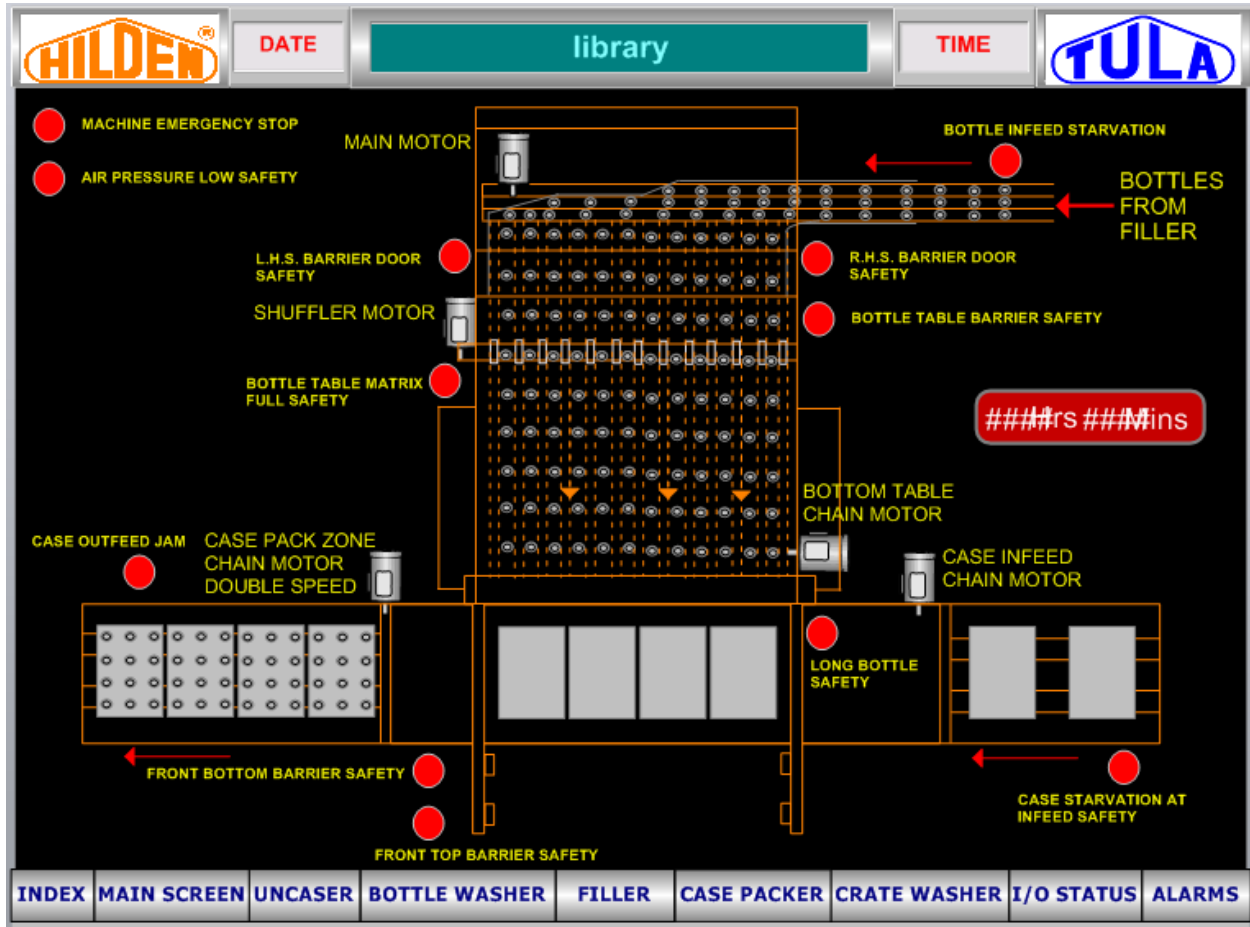
 → VISIBLE ONLY WHEN ALARM CONDITION OCCURS

32" WIDE BOTTLE WASHER



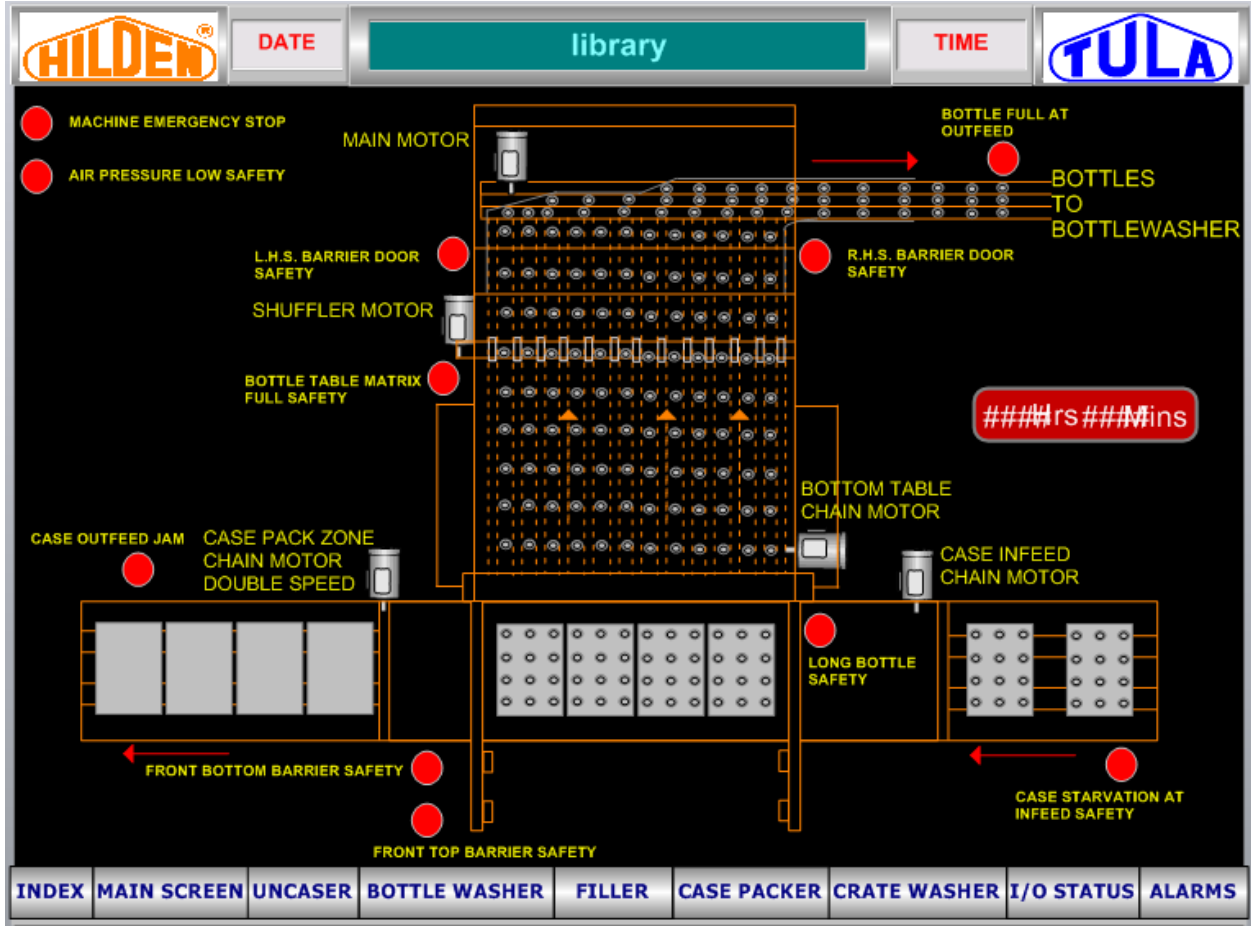
 → VISIBLE ONLY WHEN ALARM CONDITION OCCURS

4 HD CASE PACKER




 → VISIBLE ONLY WHEN ALARM CONDITION OCCURS

4 HD UNCASER




ALARMS


30/07/2011

ALARMS

12:01 PM




Message	Date	Time	State
The process MAC_DL has lost its database connection...	7/30/11	12:01:06 PM	ALARM
UNCASER FRONT TOP BARRIER SAFETY	7/30/09	11:58:10 AM	ALARM
CASER FRONT TOP BARRIER SAFETY	7/30/09	11:58:10 AM	ALARM

Ack Reset Delete Ack All
Refresh Help

INDEX MAIN SCREEN UNCASER BOTTLE WASHER FILLER CASE PACKER CRATE WASHER I/O STATUS ALARMS


INPUT STATUS SCREEN



DATE

library

TIME



ADDRESS	DESCRIPTION	STATUS
%I001	MAIN MOTOR INVERTER RUN INPUT	<input type="checkbox"/>
%I002	AIR PRESSURE LOW INPUT	<input type="checkbox"/>
%I003	WATER PRESSURE LOW INPUT	<input type="checkbox"/>
%I004	TEMPERATURE LOW INPUT	<input type="checkbox"/>
%I005	INFEEED BOTTLE STARVATION SENSOR	<input type="checkbox"/>
%I006	OUTFEED BOTTLE JAM SENSOR	<input type="checkbox"/>
%I007	DISCHARGE TABLE BOTTLE SAFETY SENSOR	<input type="checkbox"/>
%I008	LOADER LONG BOTTLE SAFETY SENSOR	<input type="checkbox"/>
%I009	LOADER CAM SAFETY SWITCH	<input type="checkbox"/>
%I010	PUSHER CAM SAFETY SWITCH	<input type="checkbox"/>
%I011	LOADER DRIVE SAFETY	<input type="checkbox"/>
%I012	PRE-SOAK DRIVE SAFETY	<input type="checkbox"/>
%I013	SOAK I DRIVE SAFETY	<input type="checkbox"/>
%I014	SOAK II DRIVE SAFETY	<input type="checkbox"/>
%I015	SPARE	<input type="checkbox"/>
%I016	DISCHARGE DRIVE SAFETY	<input type="checkbox"/>

[← BACK](#)


[NEXT →](#)

INDEXMAIN SCREENUNCASERBOTTLE WASHERFILLERCASE PACKERCRATE WASHERI/O STATUSALARMS

 → WHEN INPUT IS OFF

 → WHEN INPUT IS ON


OUTPUT STATUS SCREEN




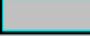














DATE

library

TIME



ADDRESS	DESCRIPTION	STATUS
%Q001	MAIN MOTOR INVERTER STOP	
%Q002	MAIN MOTOR INVERTER START	
%Q003	MAIN MOTOR INVERTER JOG	
%Q004	MAIN MOTOR INVERTER PRESET REF.ON & LSB	
%Q005	UNSCRAMBLER MOTOR INVERTER START/STOP	
%Q006	SPARE	
%Q007	SPARE	
%Q008	VAPOUR EXHAUST BLOWER ON-OFF	
%Q009	PRE-RINSE PUMP MOTOR ON-OFF	
%Q010	PRE-SOAK PUMP MOTOR ON-OFF	
%Q011	SOAK I PUMP MOTOR ON-OFF	
%Q012	SOAK II PUMP MOTOR ON-OFF	
%Q013	SPARE	
%Q014	HYDRO SOAK PUMP MOTOR ON-OFF	
%Q015	HYDRO WASH PUMP MOTOR ON-OFF	
%Q016	PRE-FINAL JET PUMP MOTOR ON-OFF	

[← BACK](#)

[NEXT →](#)

[INDEX](#)

[MAIN SCREEN](#)

[UNCASER](#)

[BOTTLE WASHER](#)

[FILLER](#)

[CASE PACKER](#)

[CRATE WASHER](#)

[I/O STATUS](#)

[ALARMS](#)

 → WHEN OUTPUT IS OFF

 → WHEN OUTPUT IS ON